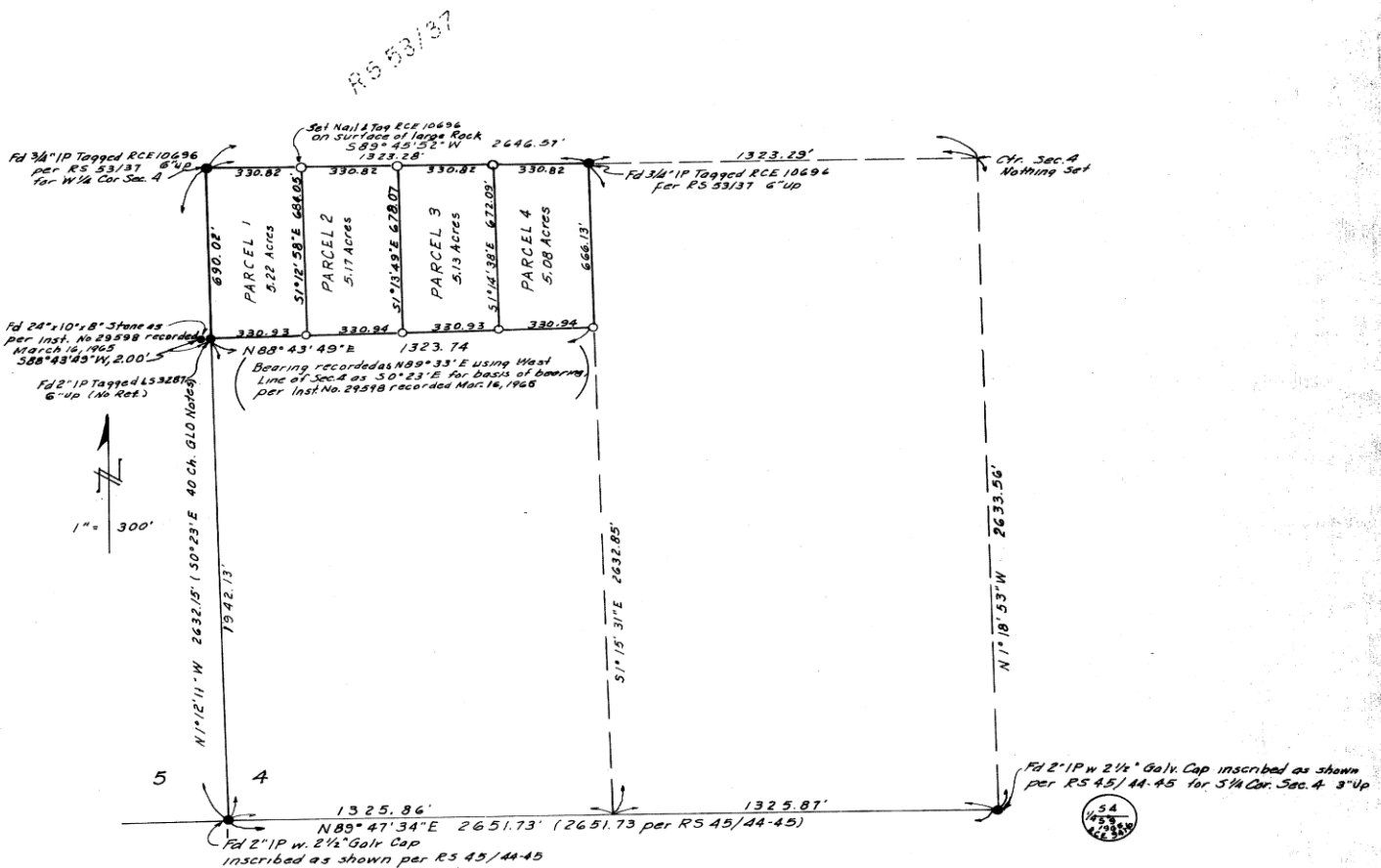


IN THE COUNTY OF RIVERSIDE RECORD OF SURVEY

IN THE SW 1/4 OF SECTION 4, T7S, R1E, SBB1M
OCTOBER 1968 WOODROW REMBOLDT

RECORDER'S CERTIFICATE
Filed this 20 day of DEC 1968 at 1:30 P.M.
in book 53 of Record of Surveys at page 40
at the request of the County Surveyor

W.D. BALOGH
County Recorder
FEE \$ 5.00 By *W.D. Balogh*
NO. 124200 Deputy



SURVEYOR'S CERTIFICATE
This map correctly represents a survey made by me or under my direction in conformance with the requirements of the Land Surveyors' Act at the request of Thomas P. Joanna Johnson in October, 1968

Woodrow Remboldt
RCE 10696

SURVEYOR'S NOTE
○ Set 3/4" I.P. Tagged RCE. 10696 6" up, unless otherwise noted
● Found monument as noted
Bears of Bearings: The south line of Section 4, T7S, R1E, SBB1M taken as N89°47'34"E per RS 45/44-45, Riv. Co. Records

COUNTY SURVEYOR'S CERTIFICATE
This map has been examined for conformance with the requirements of the Land Surveyors' Act this 20 day of December, 1968.

A.C. KEITH
County Surveyor
By *J.M. Keith*
Deputy